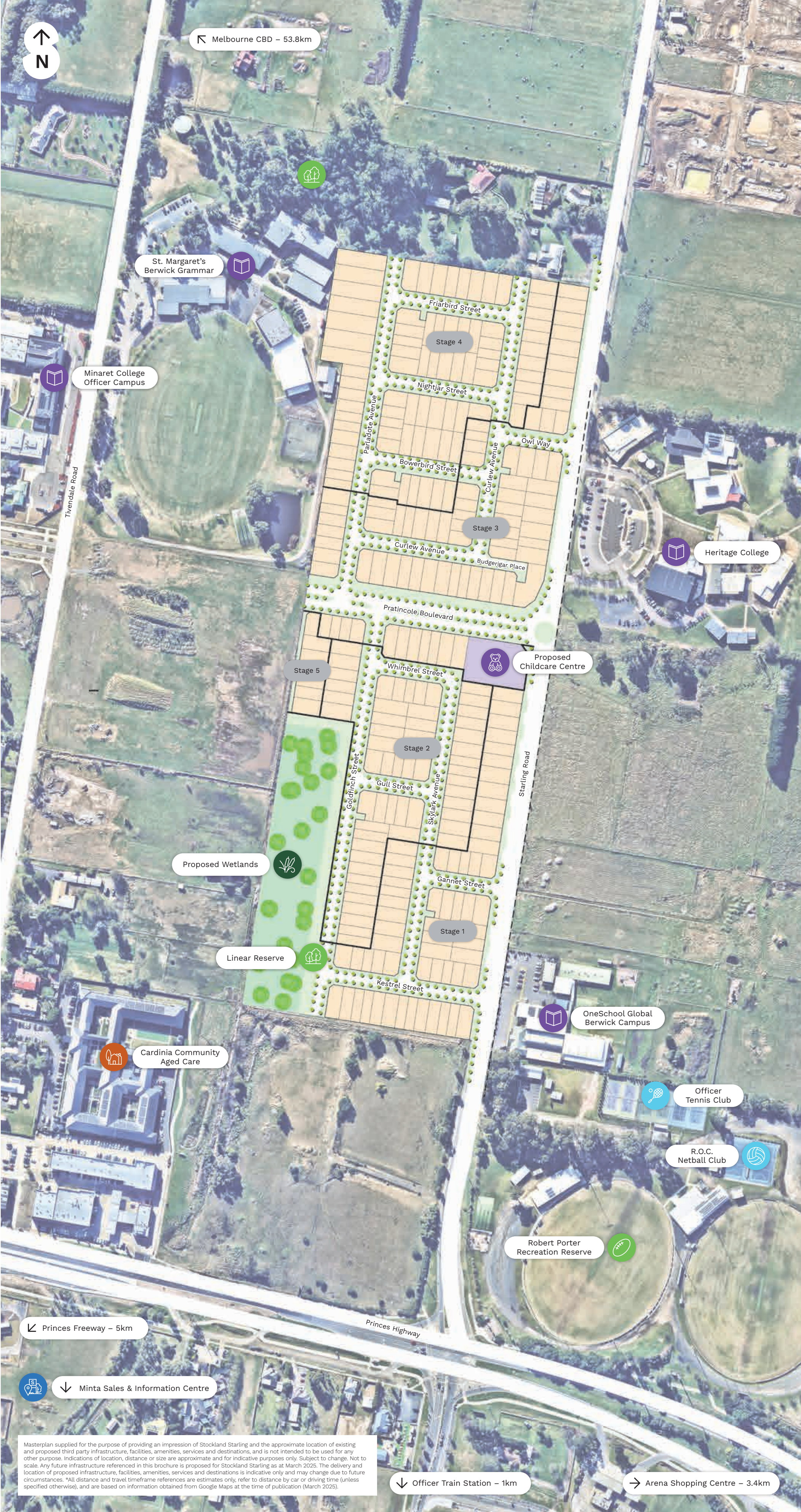


A pocket of  
potential,  
connected  
to more





- Shopping and Amenities
- Animals of Oz (Zoo) – 1.5km

One Centre Square Officer – 1.7km

IGA Local Grocer Timbertop – 2.8km

Arena Shopping Centre – 3.4km


Lakeside Square Shopping Centre – 4.8km

Beaconsfield Shopping Plaza – 6km

Pakenham Central Marketplace – 7.8km

Casey Central – 12.8km

Westfield Fountain Gate – 13km

- Transport
- Station St/Princes Hwy Bus Stop – 1.5km

Officer Train Station – 2.1km

Cardinia Road Train Station – 3.6km

Beaconsfield Train Station – 5.4km

Berwick Train Station – 8.4km

Narre Warren Train Station – 12.7km

- Leisure and Sporting Clubs
- James Bathe Community & Sports Hub – 5km

Cardinia Life Recreation Centre – 5.3km

Kangaroo Indoor Sports – 5.8km

IYU Recreation Reserve – 6.7km

Berwick Leisure Centre – 7.7km

- Education and Schools
- Heritage College – 50m

St Margaret's Berwick Grammar – 150m

Minaret College, Officer Campus – 500m

OneSchool Global Berwick Campus – 500m

St Brigid's Catholic Primary School – 1.4km

Officer Primary School – 1.5km

One Early Education Officer – 2.1km

Kurmile Primary School – 2.6 km

Maranatha Christian School – 2.9km

St Clare's Catholic Primary School – 2.9km

Orchard Park Primary School – 3.2km


Pakenham Lakeside Primary School – 3.8km

St Francis Xavier College, Officer Campus – 4.9km

Pakenham Early Education Centre – 6.3km

Berwick Lodge Primary School – 10km

Fleetwood Primary School – 12km

- Community Centres
- Officer Community Hub – 2.2km

Toomah Community Centre – 4.5km

Cardinia Cultural Centre – 4.8km

- Parks and Open Spaces
- Robert Porter Recreation Reserve – 800m

Flaxlilly Cres Playground – 2.1km

Heatherbrae Recreation Reserve – 2.5km

Officer District Park – 3km

Lakeside Recreation Reserve – 3.4km

Beaconsfield Nature Conservation Reserve – 5.2km

Pakenham Lake – 5.3km

Toomuc Recreation Reserve – 5.3km

Wilson Botanic Park Berwick – 9.3km

- Medical Centres
- Trident Medical Centre – 2.8km

Officer Medical Centre – 3.2km

Lakeside Square Medical Centre – 4.3km


Eden Rise Family Clinic – 8.2km

Monash Health - Casey Hospital – 9km


Woodleigh Waters Medical Clinic – 9km


St John of God Berwick Hospital – 9.5km


HealthMint Medical Centre – 11.8km

- Sales & Information Centre  
(located at Stockland Minta)
- Cnr Soldiers Rd & Chase Blvd

Berwick Vic 3806

- Legend
- Residential

Education

Existing Overhead Power



Sales & Information Centre  
(located at Stockland Minta)  
Cnr Soldiers Rd & Chase Blvd  
Berwick Vic 3806  
P: 13 52 63  
[stockland.com.au/starling](http://stockland.com.au/starling)



Scan for website

This brochure is provided solely for the purpose of providing an impression of the development called Stockland Starling, as well as the approximate location of existing and proposed third-party infrastructure, facilities, amenities, services and destinations, and the contents are not intended to be used for any other purpose. Stockland makes no representations and gives no warranties about the future development potential of the site, or the current or future location or existence of any facilities, amenities, services or destinations. Any statements of distance or size are approximate and for indicative purposes only. All details, images and statements are based on information available to, and the intention of, Stockland at the time of creation of this brochure (March 2025) and may change due to future circumstances. This brochure is not a legally binding obligation on or warranty by Stockland. Stockland accepts no liability for any loss or damage arising as a result of any reliance on this brochure or its contents.